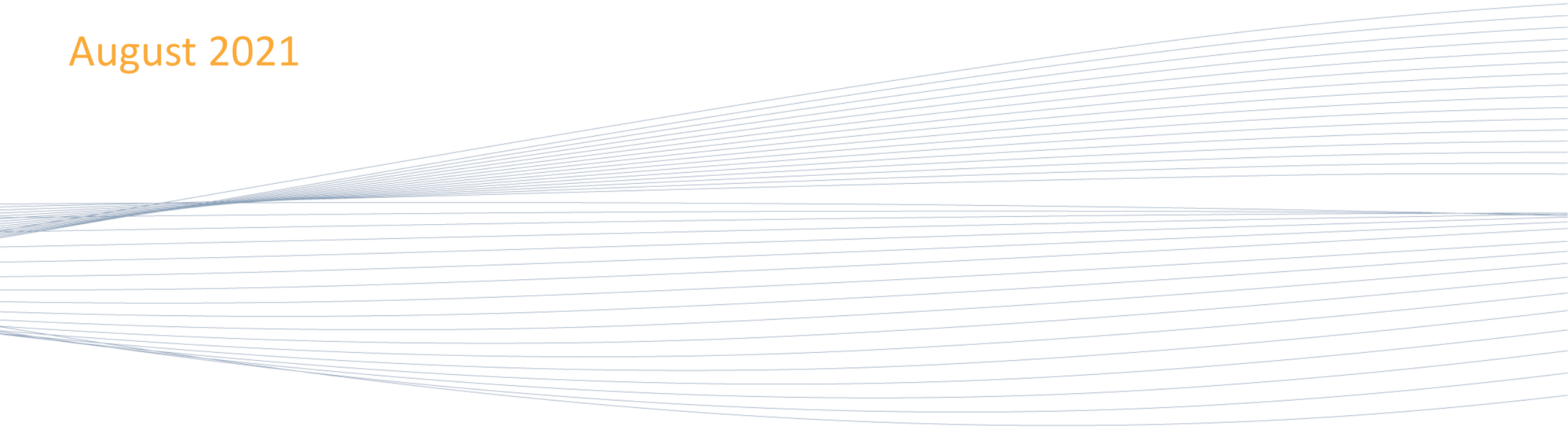




Capture the Fracture[®] Program Overview

August 2021



IOF's Capture The Fracture® Program

QUICK FACTS



A global flagship program by
the International
Osteoporosis Foundation
(IOF)

Launched in 2012

Aiming to facilitate the
implementation of Post-
Fracture Care Coordination
programs/ Fracture Liaison
Services (FLS) for secondary
fracture prevention

[Click to
learn more](#)



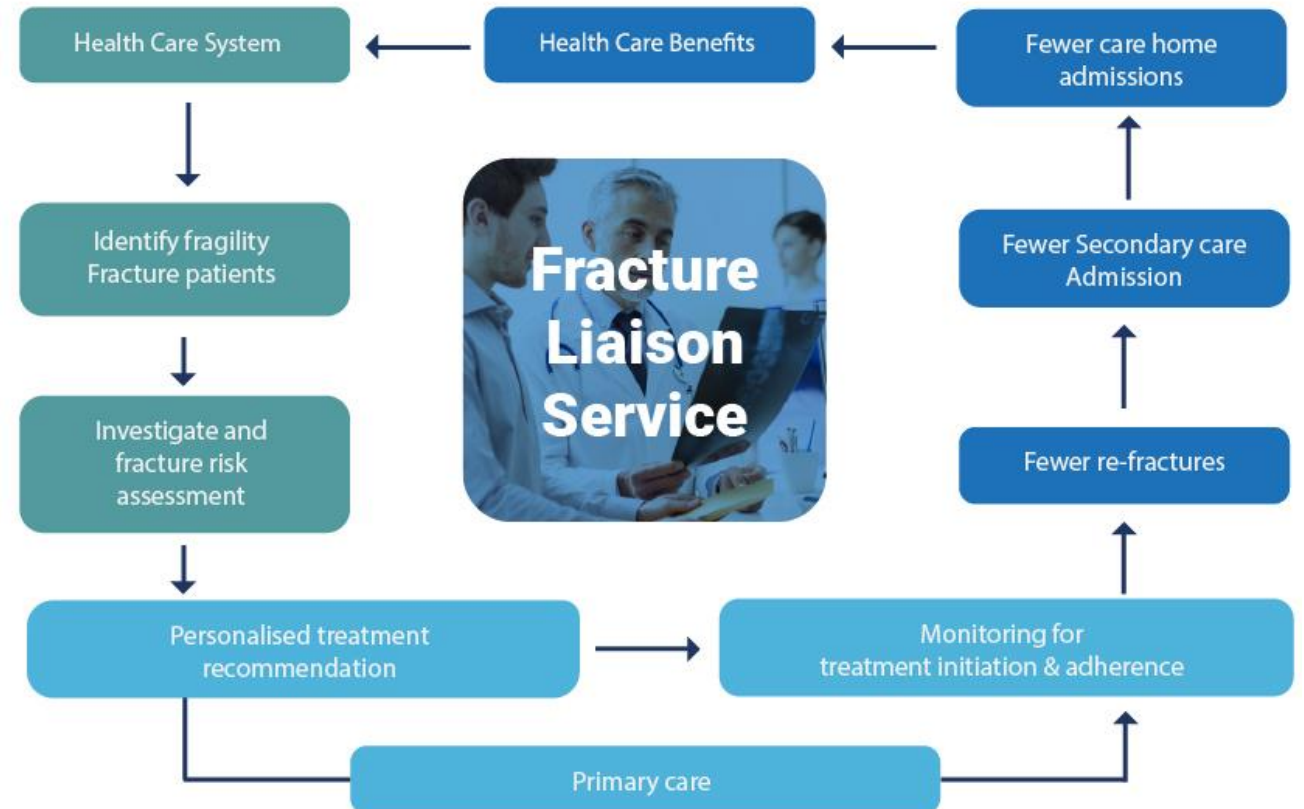
Post-Fracture Care Coordination Programs/Fracture Liaison Services (FLS): The proven solution

One fracture leads to another - a first fracture **doubles the risk** of second within a year.

Yet, 80% of fracture patients are **never offered screening and/or treatment** for osteoporosis.

Coordinated, multi-disciplinary models of care for **secondary fracture prevention** can help close this care gap.

Post-Fracture Care Coordination Programs/Fracture Liaison Services (FLS) are recognized as the single **most important step** in directly improving patient care and reducing spiraling fracture-related healthcare costs worldwide.



[Click to learn more](#)

Policy Resources

- **Capture the Fracture® Partnership – Guidance for Policy Shaping** - comprehensive document that makes the case for fracture prevention – in English & Spanish
- **Executive 1-page summary of the Capture the Fracture Partnership – Guidance for Policy Shaping** - in Arabic, Dutch, French, Italian, Japanese, Korean, Spanish, Portuguese, Russian, Turkish
- **Slide kit** summarising key messages & findings of the *Capture the Fracture® Partnership – Guidance for Policy Shaping* - in Arabic, Dutch, French, Italian, Japanese, Korean, Spanish, Portuguese, Russian, Turkish
- **Infographic** illustrating need for Post-Fracture Care – in English & Spanish

Click to learn more

CAPTURE THE FRACTURE® PARTNERSHIP
GUIDANCE FOR POLICY SHAPING

Capture the Fracture® Partnership Guidance for Policy Shaping
Executive Summary

The Headline
Fragility fractures are the broken bones which cripple millions of adults and can be prevented with proven and effective therapies.

The Problem
Fragility fractures affect millions of individuals globally. It is estimated that 13.5 million fractures per year will occur by 2025 with a cost of \$400 billion to global healthcare systems. It is a problem which has been overlooked by policy makers for too long and is set to rise exponentially with the expanding elderly population. However, a solution exists.

The Solution
Capture the Fracture® Partnership – Guidance for Policy Shaping provides a step-wise approach to building policy which is not only based on decades of dedicated, rigorous research but has also been repeatedly shown to improve patient outcomes, save money and save lives. It is targeted at the highest risk group; those who have already fractured, and so is termed **Post-Fracture Care**. This guidance document outlines four simple building blocks of an effective policy response:

- CATCH FRACTURES EARLY**
Ensure that those who have fractured are identified for treatment.
- TREAT FRACTURES WELL**
Employ world-class models of Post-Fracture Care to treat those identified.
- LIFETIME PREVENTION**
Encourage healthy ageing through straightforward public health measures.
- ENHANCE ENGAGEMENT**
Empower the public to understand the problem and become part of the solution.

The Bottom Line
Fragility fractures, like other chronic diseases, are not going away. However, unlike other chronic diseases, there is a solution which is treat, tested and fractures by up to 50%, it will deliver financial savings, it will save lives.

WHY PRIORITISE POST FRACTURE CARE (PFC) NOW?

IN YOUR COUNTRY, OSTEOPOROSIS-RELATED FRACTURES ARE EXPENSIVE AND DANGEROUS AND ARE BECOMING MORE COMMON

BREAKING A BONE AFTER A FALL
+ AGE 50 IS A SIGN OF BONE WEAKNESS AND A MAJOR RISK FOR MORE BROKEN BONES OR FRACTURES

RISK OF AN FRACTURE IS PARTICULARLY HIGH FOR THE NEXT 2 YEARS

PFC PROGRAM
A CARE SYSTEM WITH A MULTIDISCIPLINARY COORDINATOR BASED TEAM THAT ASSESSES, TREATS AND MONITORS FRACTURE PATIENTS TO STRENGTHEN THEIR BONES AND PREVENT MORE FRACTURES

IDENTIFY
POST FRACTURE CARE PROGRAMS
PRIORITY FRACTURE PATIENTS
INVESTIGATE

PRIORITIZE PFC DELIVERY
LIMITED HEALTHCARE RESOURCES? MORE COST-EFFECTIVE TO TARGET PATIENTS WHO HAVE ALREADY FRACTURED THAN TRYING TO PREVENT THE 1ST FRACTURE

COMPARING CAUSE FOR LONG TERM CARE AND EXPECT TO BENEFIT FROM TREATMENT

SECONDARY CARE SETTING
PRIMARY CARE COMMUNITY SETTING

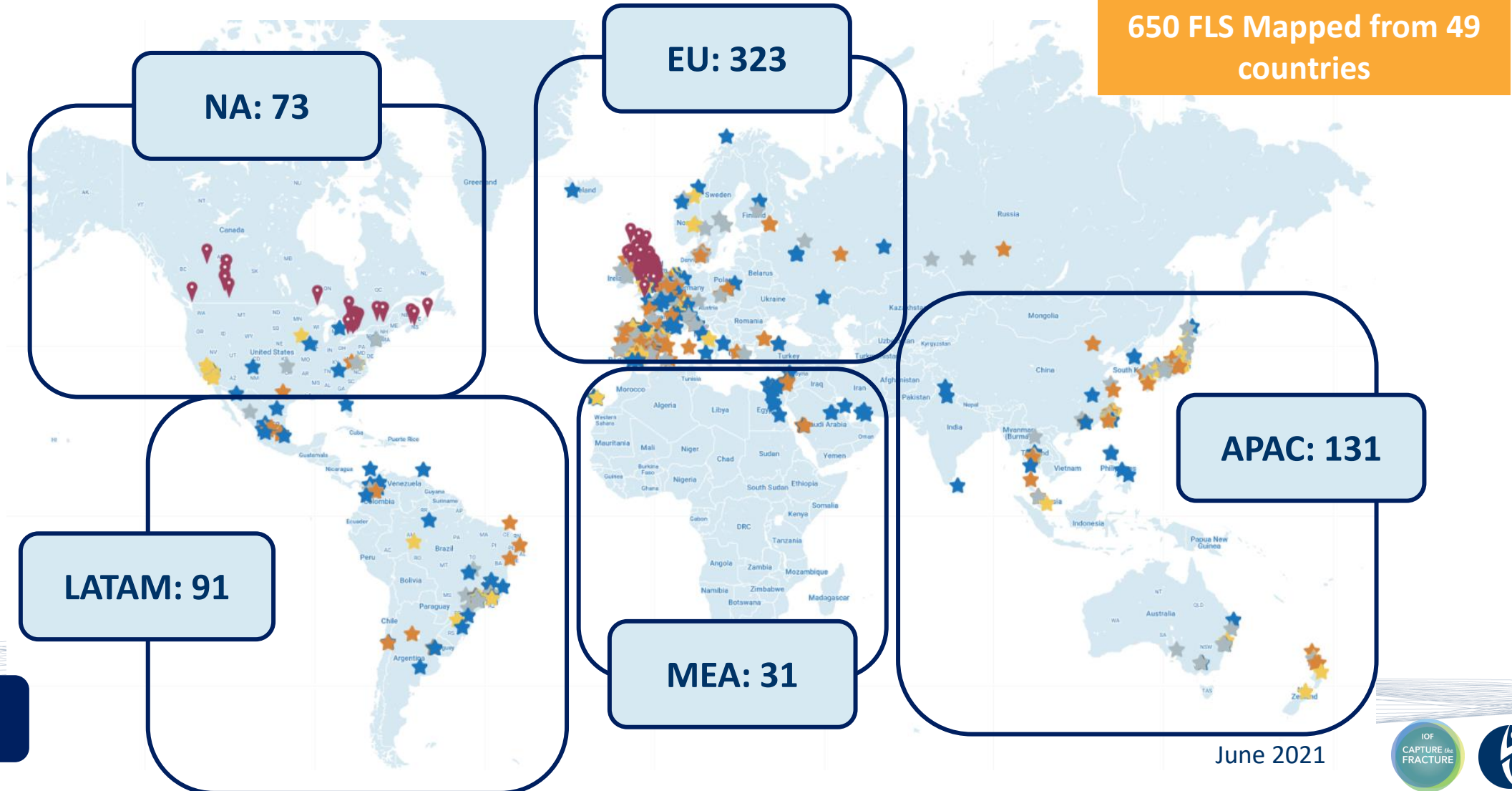
CAPTURE THE FRACTURE® PARTNERSHIP
Policy Tools for Engagement
Dr Nicholas Fuggle BSc MBBS MRCP
Professor Cyrus Cooper OBE DL FMedSci

An IOF initiative, supported by Amgen and UCB in collaboration with the University of Oxford

IOF International Osteoporosis Foundation

Capture The Fracture® Global Map of Best Practice

INTERNATIONAL RECOGNITION FOR POST-FRACTURE CARE COORDINATION PROGRAMS/
FRACTURE LIAISON SERVICES WORLDWIDE



[View the Map](#)

June 2021

Best Practice Framework

ENSURING PFC/FLS QUALITY

1. Set the standard for PFC/FLS (13 Standards)
2. Guidance
3. Benchmarking and quality improvement
4. Available in 15 languages

1. Patient Identification
2. Patient Evaluation
3. Post Fracture Assessment Timing
4. Vertebral Fracture (VF) ID
5. Assessment Guidelines
6. Secondary Causes of OP
7. Falls Prevention Services
8. Multifaceted Assessment
9. Medication Initiation
10. Medication Review
11. Communication Strategy
12. Long-term Management
13. Database



Click to learn more

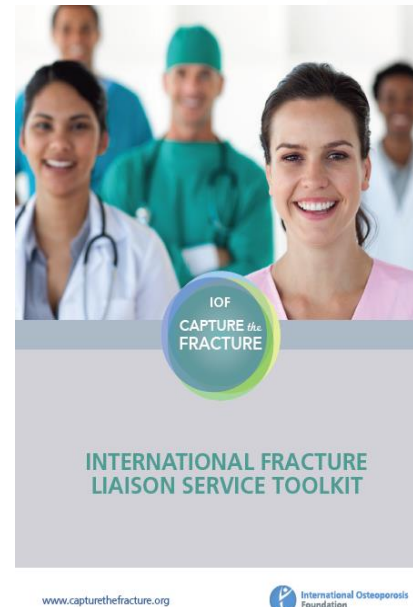
Akesson OI 2013



Capture the Fracture® International Fracture Liaison Service Toolkit

SUPPORTING PFC PROGRAM/FLS IMPLEMENTATION AND SUSTAINABILITY

- In-depth explanation of PFC programs/FLS
- A step-by-step PFC program/FLS implementation guide
- Guidance on building a coalition for PFC programs/FLS
- Guidance on policy and advocacy
- How to Get Started roadmap
- How to Become More Effective roadmap



FLS IMPLEMENTATION

AND EXPANDING YOUR FLS

IOF launched the Capture the Fracture Campaign on a worldwide basis. A Best Practice Framework (BPF) was developed and published. IOF consulted with leading experts from many countries who have extensive data-testing to ensure that the standards were internationally benchmarked for FLS, which defines essential and aspirational steps to implement an FLS model of care:



STEP-BY-STEP GUIDE TO FLS PLANNING AND DEVELOPMENT

IOF process improvement methodology has been used by groups that have implemented FLS in the UK and the Great States. An overview of the application of IOFIA methodology, in addition to links to other useful resources.

IOFIA methodology has been used by groups that have implemented FLS in the UK and the Great States. An overview of the application of IOFIA methodology, in addition to links to other useful resources.

IOFIA methodology has been used by groups that have implemented FLS in the UK and the Great States. An overview of the application of IOFIA methodology, in addition to links to other useful resources.

IOFIA methodology has been used by groups that have implemented FLS in the UK and the Great States. An overview of the application of IOFIA methodology, in addition to links to other useful resources.

Download here



Educational Activities

Educational material to PFC program/FLS coordinators, healthcare professionals and other stakeholders through webinars with world-renowned expert speakers.

Some key topics:

FLS Implementation

FLS Sustainability

Health Economics

Joining CTF

Success Stories

Vertebral Fractures

[View more](#)

Recent webinars



BoneCast
A CAPTURE THE FRACTURE® WEBINAR

IOF CAPTURE the FRACTURE

WEBINAR
DXA-VFA IN THE FLS SETTING

The poster features a hand pointing at a computer monitor displaying medical data, with a blue and white color scheme.



BoneCast
A CAPTURE THE FRACTURE® WEBINAR

IOF CAPTURE the FRACTURE

WEBINAR
EFFECTIVE PATIENT MONITORING STRATEGIES
(How, What, When, Who)

IOF

The poster includes icons for medical care, ambulance, first aid, and heart doctor health pulse, along with a person icon and a world map.



BoneCast
A CAPTURE THE FRACTURE® WEBINAR

IOF CAPTURE the FRACTURE

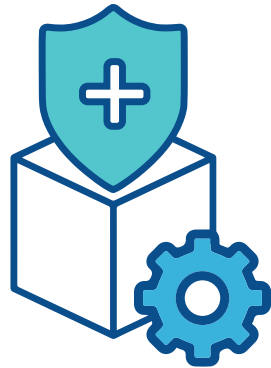
WEBINAR
MAKING THE BEST OF FLS
key performance indicators

IOF

The poster features a hand pointing at a glowing 'KPI' graphic, with a bar chart and gear icon.



Capture the Fracture[®] Resource Center



RESOURCE CENTER

A comprehensive collection of **free resources** to support those who want to **implement, improve, or advocate** for Post-Fracture Care Coordination Programs (PFC) / Fracture Liaison Services (FLS)



YOU WANT TO IMPLEMENT A PFC/FLS

Assets used to **implement** a Post-Fracture Care Coordination Program

- Mentorship Program
- Benchmarking & Audits
- Patient Resources
- Training for HCPs
- Fracture Burden
- Digital Tools



YOU ALREADY HAVE A PFC/FLS

Managing and **improving** your Post-Fracture Care Coordination Program

- Benchmarking & Audits
- Patient Resources
- Mentorship
- Training for HCPs
- Digital Tools



ADVOCATING FOR PFC/FLS

Engagement tools and resources to introduce the concept of a Post-Fracture Care Coordination Program

- Policy Toolkits
- Audit Reports
- IOF Tour
- Global Patient Charter
- CTF Map of Best Practice

[View more](#)



Success Stories

- Examples of coordinator-based, post-fracture models of care demonstrate that a systematic approach to fragility fracture prevention has been successfully implemented in many countries, with structurally distinct healthcare systems

Recent success stories

Waitematā District Health Board



Hospital Público de Monforte



[View more](#)



WHY JOIN CAPTURE THE FRACTURE®? WHAT ARE THE BENEFITS?



Benchmarking for FLS against the internationally endorsed Best Practice Framework, highlighting strengths and areas improvement for your FLS



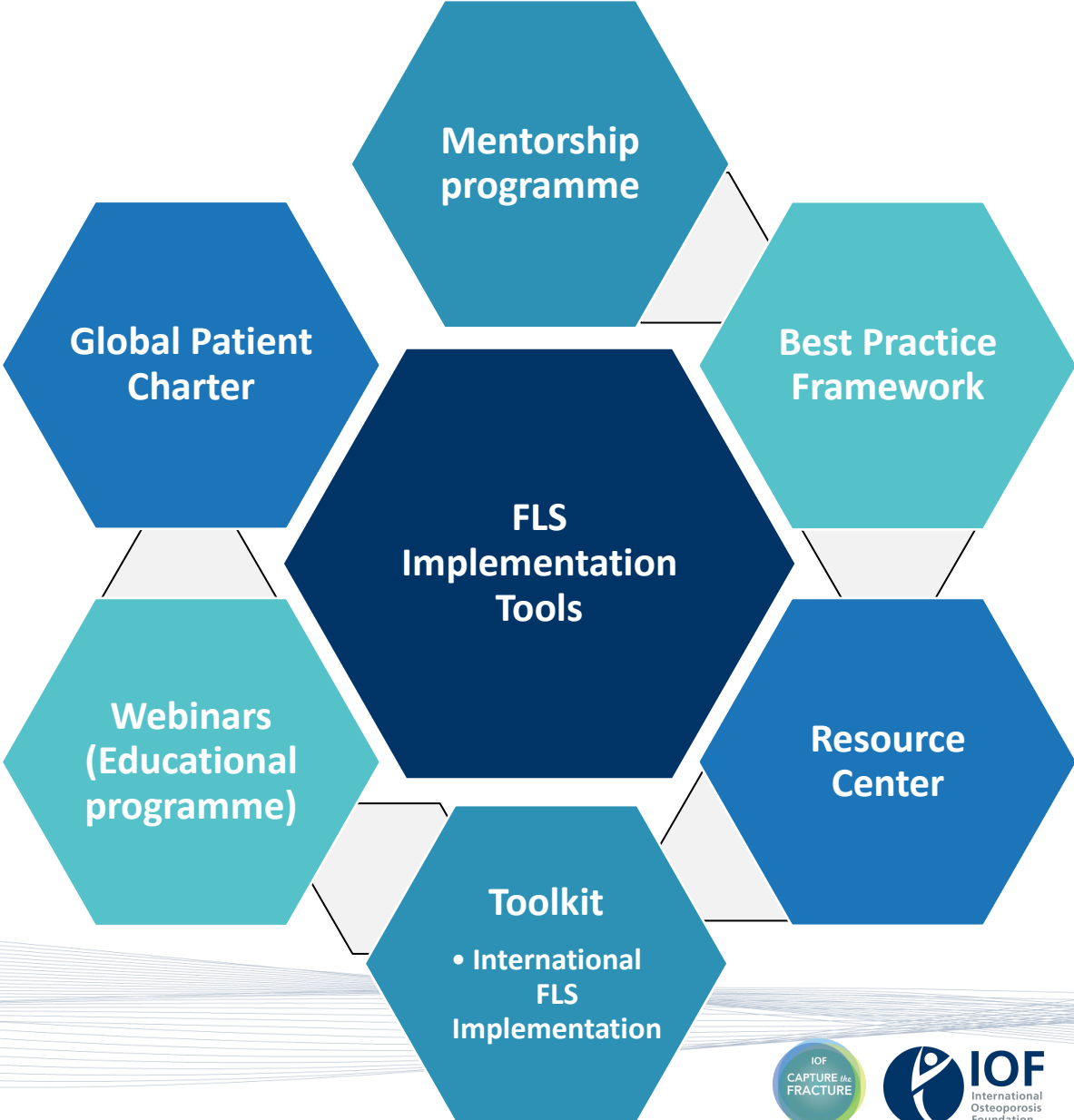
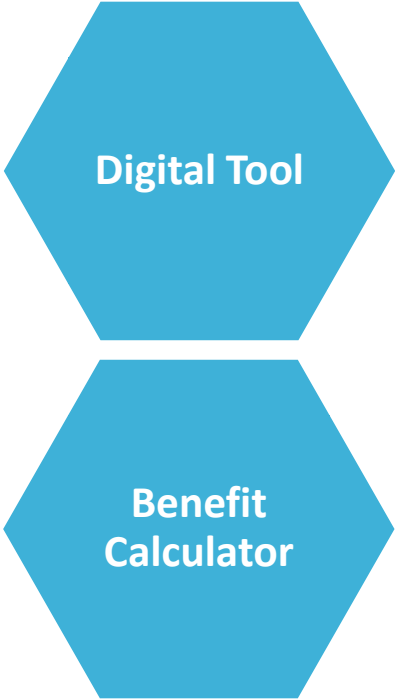
Access to resources, tools, and international FLS experts who can share their expertise, provide mentorship and support



Increased visibility for your FLS, for patients, HCPs and policy makers – for the advancement of care and management of patients with osteoporosis

CAPTURE THE FRACTURE® TOOLS FOR SECONDARY FRACTURE PREVENTION

Capture the Fracture® offers an abundance of tools to aid in sustainably implementing and operating, as well as advocating for Post-Fracture Care Coordination Programs/Fracture Liaison Services



QUESTIONS ABOUT CAPTURE THE FRACTURE®?



www.capturethefracture.org



capturethefracture@osteoporosis.foundation





Our vision is a world without fragility fractures,
in which healthy mobility is a reality for all.

Join us

